

# nexture

## NANO TEXTURE

LIGHTNESS



36.5°C CONTROL



WEATHER PROTECT



KEEP DRY



STYLISH FASHION



Finetex EnE



SKI & SNOW BOARD

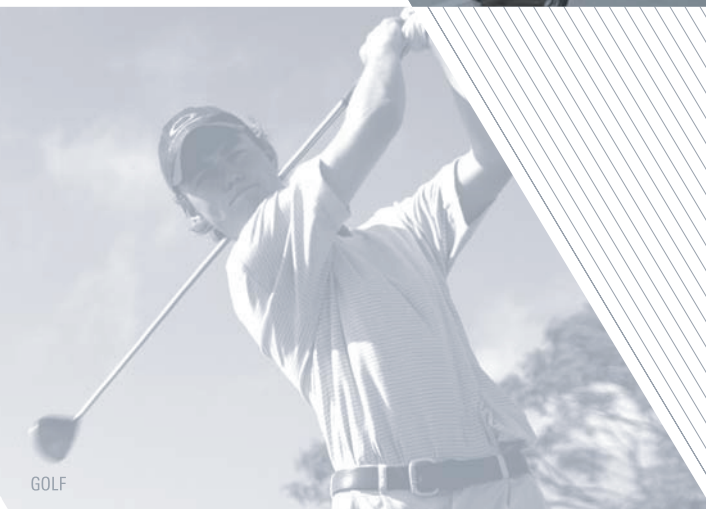
## Keep The Best Condition



ACTIVE (RUNNING/CYCLING)



TREKKING & FISHING



GOLF

- 01 Keeps you fresh
- 02 Excellent weather protect
- 03 Is like your skin
- 04 Is the next generation of Nanotechnology
- 05 The integration of Nanotechnology

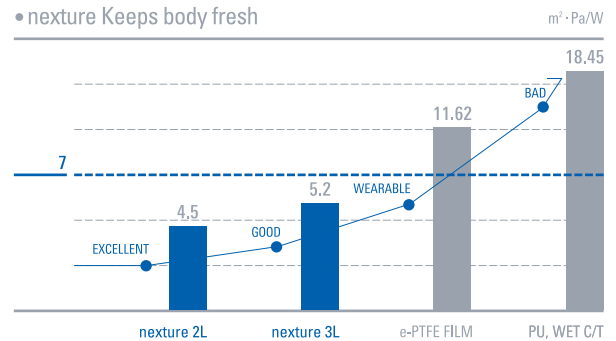
## FRESHNESS

### (R.E.T : Resistance to Evaporative Transmission)

The evaporative resistance is a measure of moisture permeability which affects the latent heat transfer from the skin through the clothing layer and affects evaporative heat loss from skin surface. The comfort level can be translated with R.E.T measurement, and any number below '7' represents comfort and lower number translates to 'bigger comfort'.

**nexture demonstrated excellent level of breathability and air/moisture permeability.**

• nexture Keeps body fresh



## BREATHABILITY

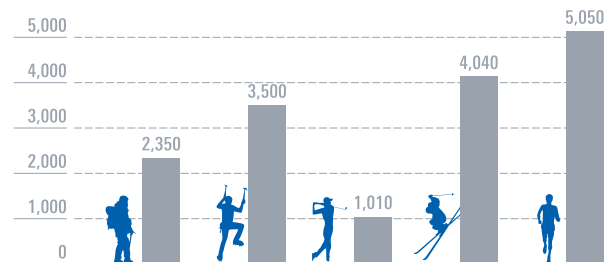
The "breathable" performance of moisture vapor refers to the capability to move or transfer moisture in the form of vapor. Moisture vapor breathability of nexture helps to remove sweat and reduce body core temperature.

Nano-pores of nexture work just like human skin.

-thus, it gives a body an extra comfort.

• Required moisture permeability

Amount of perspiration (g/m² · 24hr.)



## AIR PERMEABILITY

nexture gives you new experience like you never experienced ever before.

Excellent air permeability allows your body feeling cool and fresh during workout or any outdoor activities.

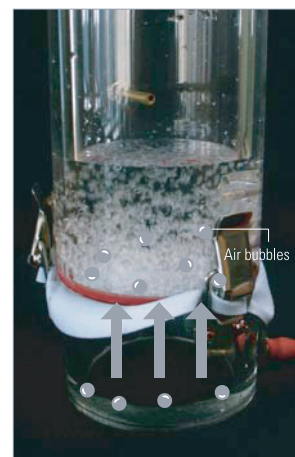
### <Test>

Fill the test plate with water, and inject air using air pump from the bottom. This test proves air permeability level of nexture.

### <Test result>

Regular membrane does not show any signs of air penetration, however nexture membrane shows air bubble penetrating through nano scale of pores.

• Air permeability test



nexture



Regular product

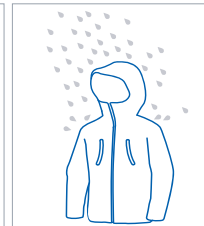
# Excellent weather protect

## WATERPROOF

The membrane is what makes the fabric waterproof.  
Nano size of membrane pores prevent rain or snow to penetrate into the fabric keeping a body dry.



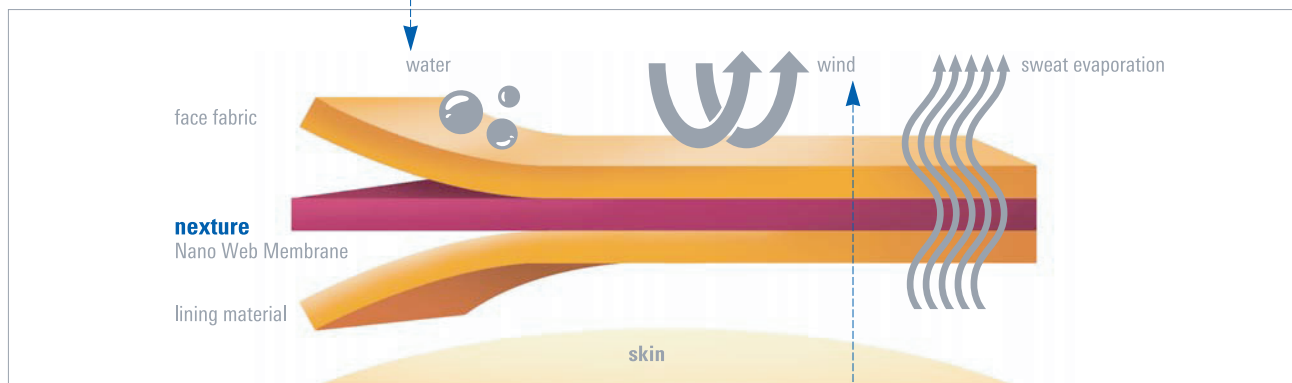
• Umbrella  
200-300mmH<sub>2</sub>O



• Raincoat  
300-500mmH<sub>2</sub>O

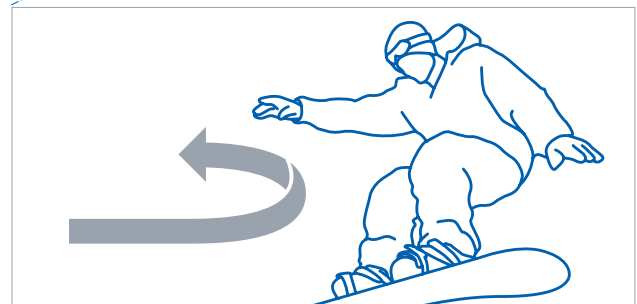


• Sitting on a cycle  
1,600-2,000mmH<sub>2</sub>O



## WINDPROOF

nexture blocks icy wind to penetrate inside of fabric and maintains adequate distance between body and clothing to keep favorable warm temperature and dry condition.



### • Sensory temperature calculation

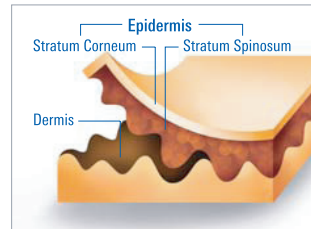
$T - (4 \times \sqrt{V})$  (T : Temperature, V : Velocity)

Ex) Temperature 20°C, Wind velocity of 9 m/h, Sensory temperature

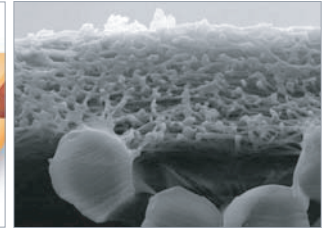
→  $20 - (4 \times \sqrt{9}) = 8^\circ\text{C}$

nexture designed similar to human skin gives a body the highest level of comfort.

• <b>Freshness(R.E.T)</b> •	• R.E.T : Below $7\text{m}^2 \cdot \text{Pa/W}$ •
• <b>Air Permeability</b> •	• Below $0.5\text{cm}^3/\text{cm}^2/\text{sec}$ •
• <b>Breathability</b> •	• Over $25,000\text{g}/\text{m}^2/24\text{hr}$ •
• <b>Waterproof</b> •	• Over $7,000 \text{ mmH}_2\text{O}$ •



Cross section of human skin



Cross section of nexture

## INFRARED RAY TEST

Infrared Ray Test was conducted in order to see how fast and well nexture can release heat compared to regular products. The I.R test is known as "heat" or "heat radiation" and heat is vividly shown by multiple color with yellow being the highest temperature.

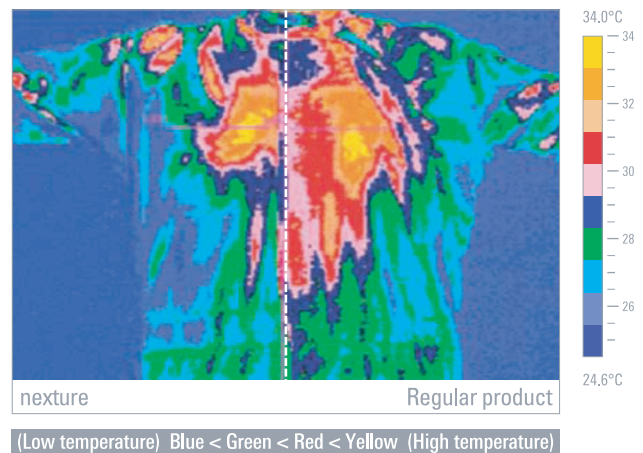
### <nexture>

The result shows nexture has an outstanding breathability and that it helped quickly release body heat generated from workout.

### <Regular product>

With regular product, there wasn't much reduction in body heat after workout.

### • Temperature change after exercise



## APPLICATIONS

### TREKKING & FISHING WEAR

From armature to professional mountain climbers (or fisherman) can enjoy light, waterproof, weather protection nexture. It is durable and keeps body warmth through out the journey.

### SKI & BOARD WEAR

nexture regulates skier and boarder's body temperature with its amazing breathability.

### GOLF WEAR

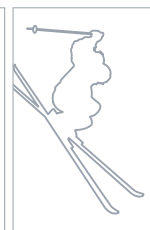
Soft, light and yet functional fabric makes it excellent for golf wear.

### ACTIVE (RUNNING/CYCLING) WEAR

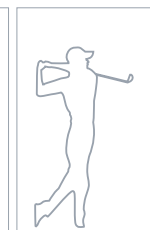
nexture gives a new level of comfort. It pulls perspiration away from skin to keep body dryer and more comfortable. It keeps body feeling cool and dry and it is the best fabric for active wear.



TREKKING & FISHING



SKI & SNOW BOARD



GOLF



ACTIVE (RUNNING/CYCLING)



# Is the next generation of Nanotechnology

## WHAT IS "nexture"?

nexture is the created by integrating Nanotechnologies.

This is the newest and the most excellent material accelerates the function of breathability, water & windproof and durability which is excellent characteristics for any variety range of outdoor apparels.



## HOW IS IT POSSIBLE?

### • Nano Web Membrane of nexture

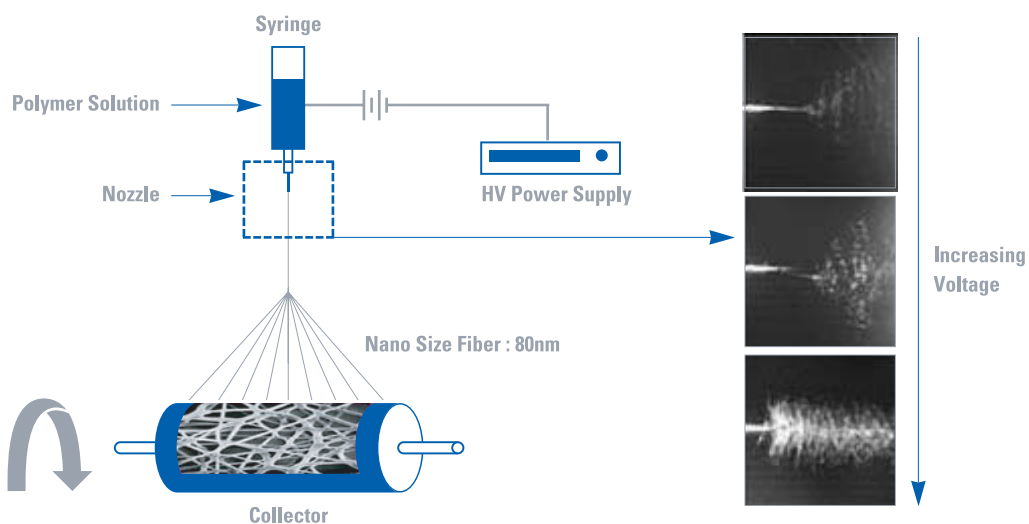
Nano scale is 1/ 10 billion unit.

Nano fiber written as 1nm, represents the thickness of fiber in nano meter. Produced from electro spinning to formulate the Nano Web Membrane structure. The method is very different from regular yarn spinning and that different electric charges were applied to the fabric, resulting in nexture Nano Web Membrane.



Nano fiber & 1 Human hair

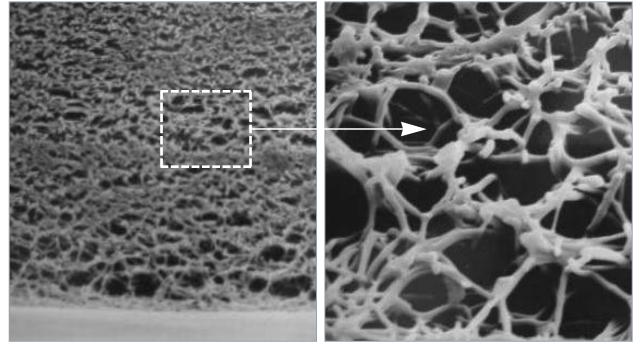
### • nexture's behind theory of Nano Web Membrane



# The integration of Nanotechnology

## POROSITY & MASSIVE SURFACE AREA

- Per 1g 3,800km of extensive Nano Web structure formulated by the size of micro nano scales of water bubbles which blocks any water access.
- Beyond the calculation of surface interacts with air and functions for instant circulations of sweat and moisture to maintain the utmost level of comfort ness in apparels.



Cross section sem magnified by 350 times

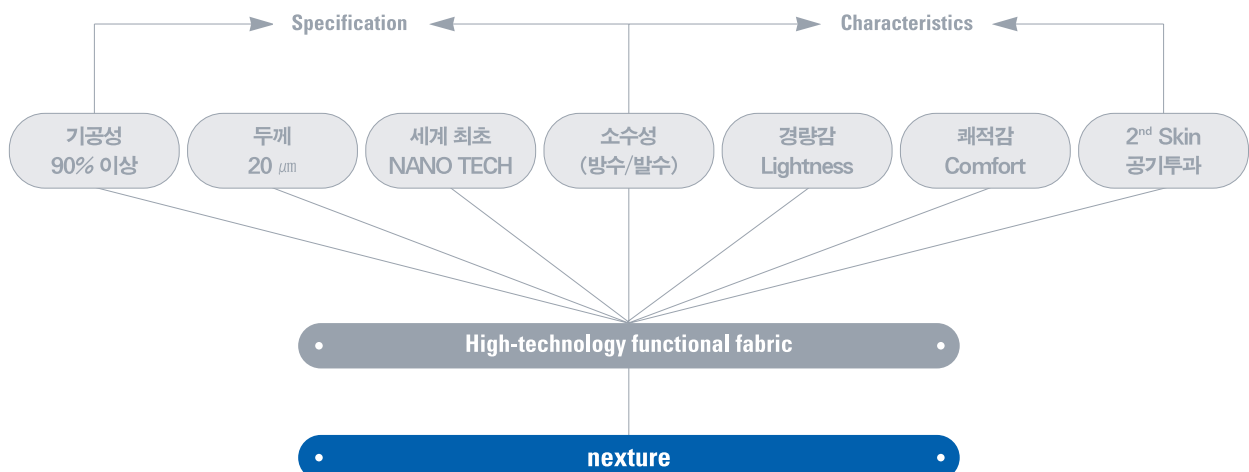
Cross section sem magnified by 2,000 times

## HYDROPHOBIC

Preventing any water to penetrate into the clothing helps to maintain body fresh.

## LIGHT WEIGHT

Only weighing 1/3 of regular products.



Keep The Best Condition

**nexture**<sup>®</sup>  
NANO TEXTURE



**Finetex EnE**  
[www.ftene.com](http://www.ftene.com)

FT Bldg., 475-31, Bangbae 2-dong, Seocho-gu, Seoul 137-060, Korea  
82-2-3482-0853 Fax. 82-2-523-0544